



## CASE STUDY

Kirsten Davey, Assistant Headteacher  
Townsend Church of England School

### AT A GLANCE

#### PREVIOUS CHALLENGES

- Collating Evidence
- Finding a user friendly system to fit their school
- Tracking appraisals, monitoring and objectives

#### CURRENT BENEFITS

- SchooliP centrally stores all evidence and links back to staff appraisals
- "SchooliP is a much more user friendly piece of web based software compared to other similar products on the market"
- All essential process feed back into one another, allowing for easy tracking



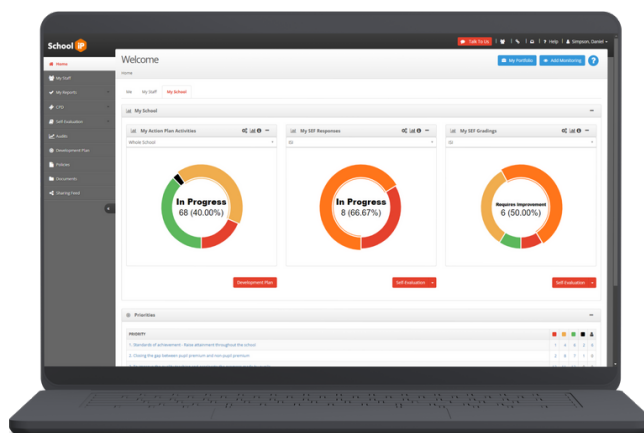
"...It is easy to use, highly efficient and it cuts down workloads..."

#### KIRSTEN DAVEY

Assistant Headteacher  
Townsend Church of England School

### OVERVIEW

Townsend Church of England School is a secondary school based in St. Albans, Hertfordshire. Here we explore the benefits that the school is enjoying in using SchooliP and moving from a paper based performance management system. Assistant Headteacher, Kirsten Davey explained that their previous system was somewhat tiresome.



### IMPACT

Kirsten stated "We now have a central place for all appraisal records and monitoring the process is very easy. I can see if suitable objectives have been set and if they are being achieved. For instance, at a glance, I can oversee the quality of teaching and learning throughout the school."

Kirsten also added that "Previously we were printing out a large amount of paper and a large amount of time was spent collating evidence. We are grateful that this workload has been decreased."